

Find Us on
Instagram

THE HIKING - HOUSEHOLD -

Egremont Castle




A series of child friendly nature trails
exploring Cumbrian Green Spaces




Can you see the different shapes of trees? What colours can you see?

Pedestrian access to Egremont Castle from Castle Villas. Steps to navigate.


 A 0.4 mile perimeter walk. Pram accessible.

What is that ahead? Can you see the Castle? Use your imagination, what else could this be? A house, a fairy castle.....

 A 0.3 mile explore of the castle ruins. Not pram accessible.


What textures can feel on your walk today? Are the rocks hard? Smooth? Rough? How does the grass feel under your feet? Your hands? Use your senses to guide you on this walk.

Take care as you walk round the corner. Are you higher or lower than before?

 Extension to the river using permissive footpath. Not pram accessible.

STOP! Take the steps to explore the castle further.

Stop! Look at the steep stairs, why not count these as you go up?

STOP! Can you see Egremont Castle up ahead? Learn some interesting facts about this castle over the page! 

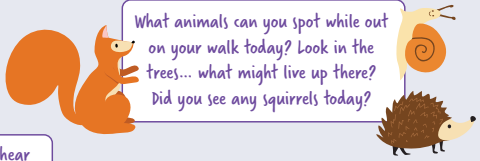
Egremont Castle, stay and play for a while. Can you use your imagination and pretend to be back in history?

Why not take a seat on one of the benches and read one of your favourite stories? Do you have any books about castles you could enjoy?

Can you see the castle ruins? Use your imagination and imagine how the castle use to look like. Tell your grown up a make believe story while you walk.

Can you hear the birds in the trees?

Use your senses, what can you hear, see, touch as you walk under these trees?

What animals can you spot while out on your walk today? Look in the trees... what might live up there? Did you see any squirrels today? 

Permissive path, please stick to the footpath at all times.

What sounds can you hear from the water? Is the water flowing fast or slow today?

Can you see the river? What animals might enjoy this habitat?



Thank you to Cumberland Council Early Years and Public Health Teams for funding this family friendly map.

Safety Brief: This map follows accessible footpaths, gravel paths and a permissive path. Please do take care when walking and stick to the footpaths at all times. Dog walkers and their dogs are always welcome but please do keep them on a lead and clean up after your dog. Please note that this walk is correct at time of writing.

Did you know?

Fun Facts about Egremont Castle:

The earliest castle at Egremont was built around 1120.

It was centred on motte, a large mound of earth shaped like an upturned pudding basin. Can you see this mound today?

In 1315 Egremont Castle was attacked by Robert the Bruce's army.

It was then refurbished and became a home as well as a military base.

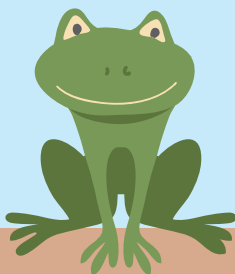
The end of Egremont as an occupied castle came around 1570 when it was most likely deliberately dismantled as punishment for a plot to put Mary, Queen of Scots, on the English throne.

Today the grounds and ruins are beautifully kept and Egremont Castle, and grounds, was the first site in Cumbria to be awarded a Green Heritage Award in 2004.

Want to explore more? Why not check out these family friendly walks in the surrounding areas? More information on local walks can be found at www.thehikinghousehold.com



SCAN ME!



For the grown ups:

Egremont Castle can be accessed from Bookwell Road. If travelling by car: free on street parking available on Bookwell Road, postcode: CA22 2JW.

Improve your Carbon Footprint: did you know Egremont Castle is walking distance from Egremont town centre and bus station. Why not hop on the bus from Workington or Whitehaven?